



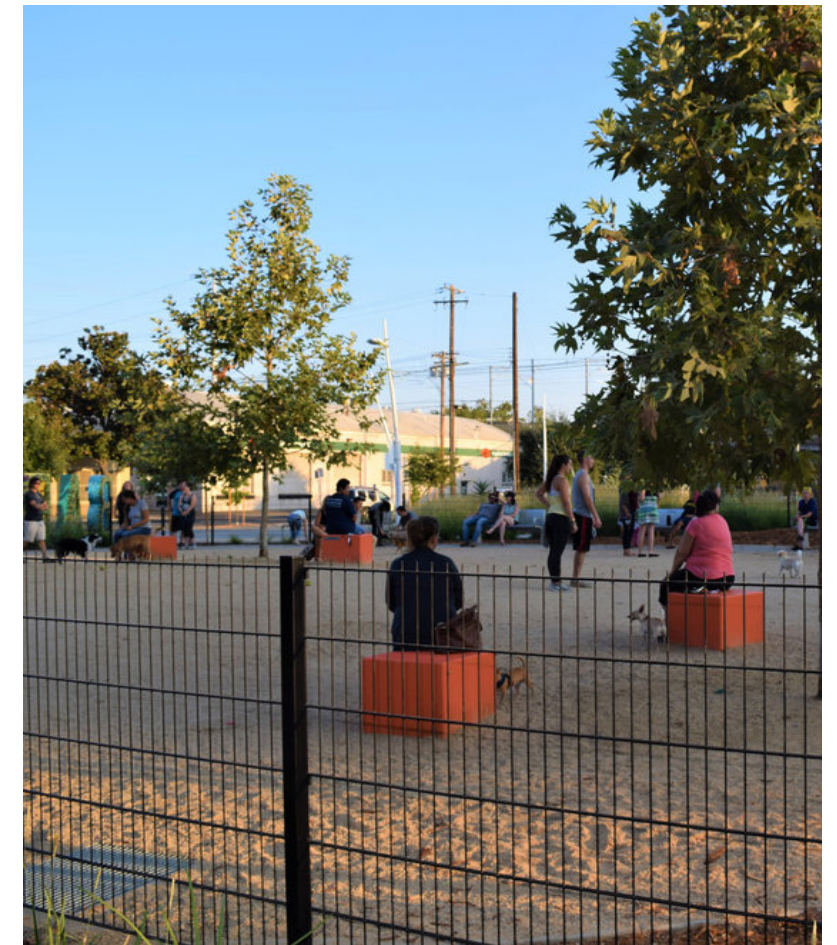
SIDEWALK AND STREET TREES WITH ORNAMENTAL PLANTING



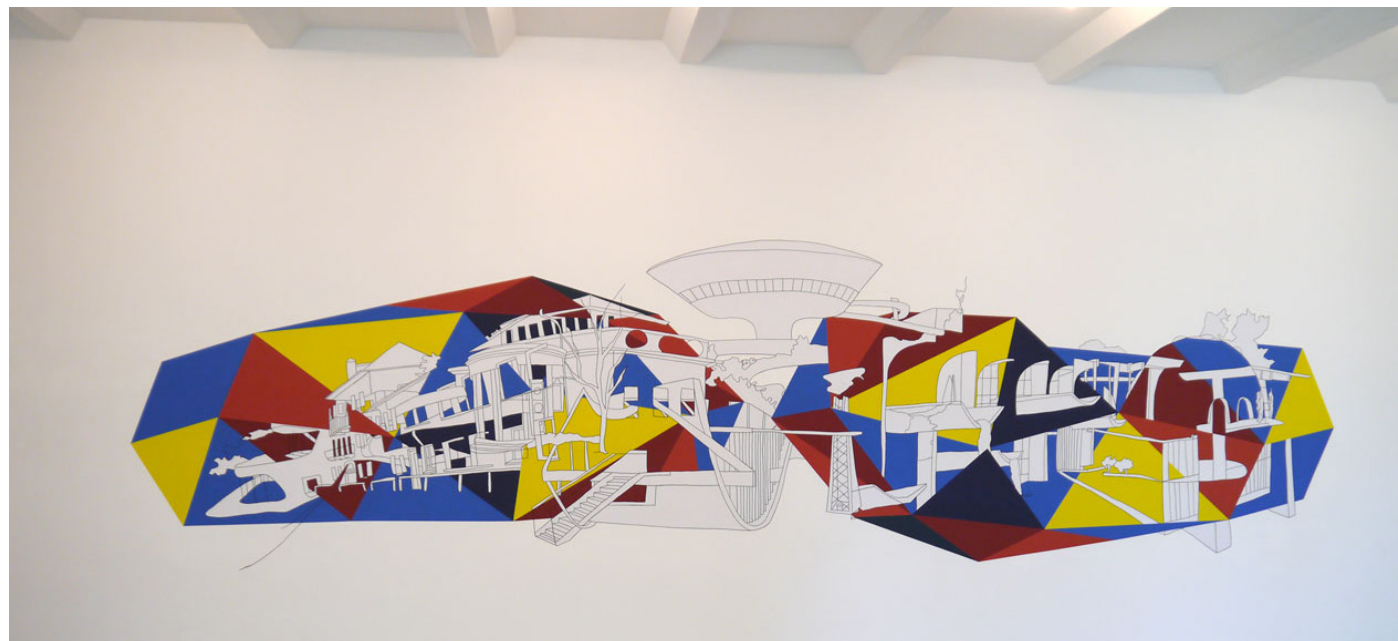
LUSH PLANTED TERRACED GARDEN



KENNEDY PLAZA PAVING



DOG RUN



MURAL EXAMPLE ON WALL FACING KENNEDY STREET, NE
COMMISSIONED ARTIST: KIM SCHOENSTADT

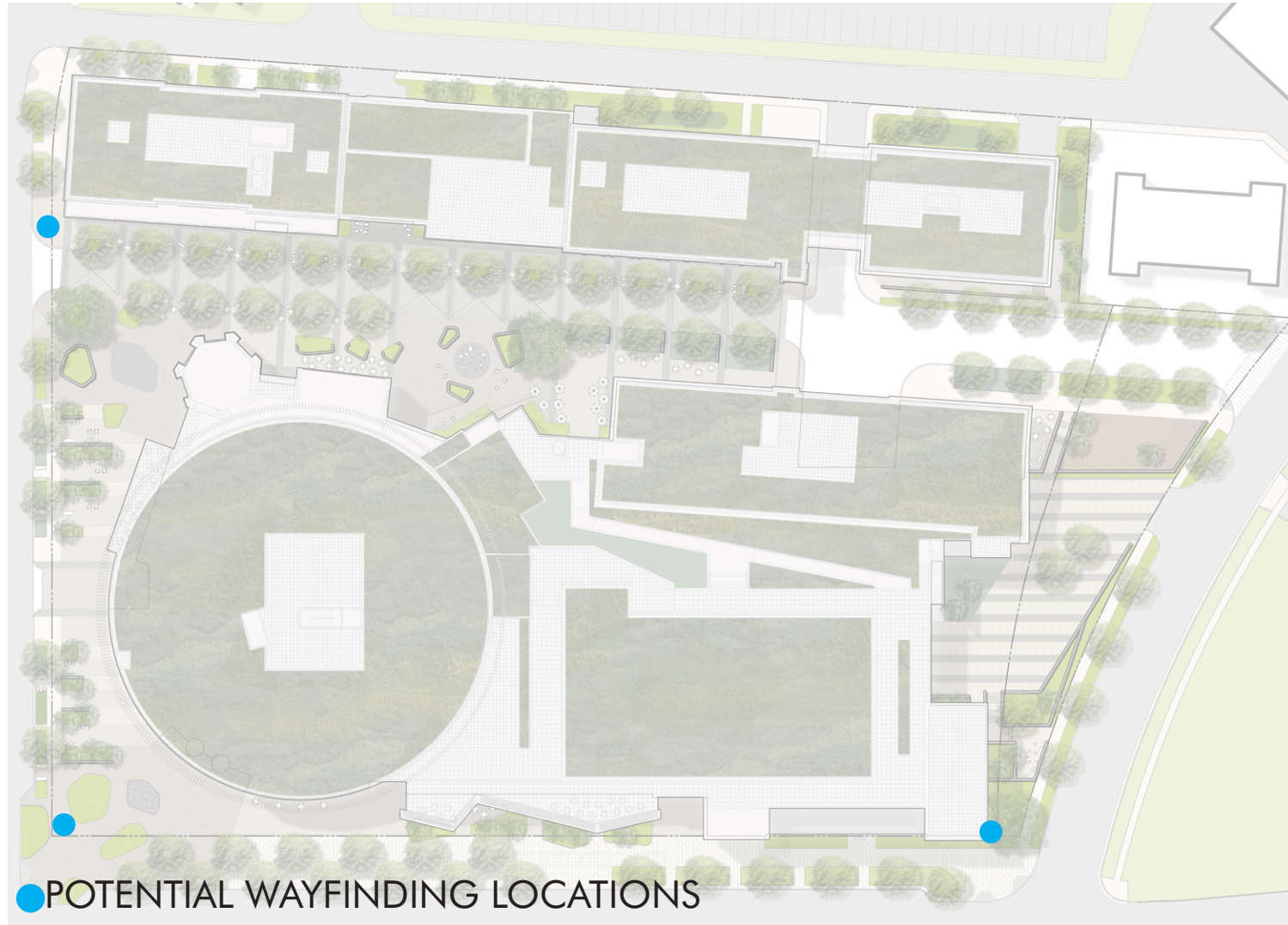


BIORETENTION PLANTING



ORNAMENTAL TREES AT GALA ENTRANCE

KENNEDY STREET, NE
CHARACTER IMAGES



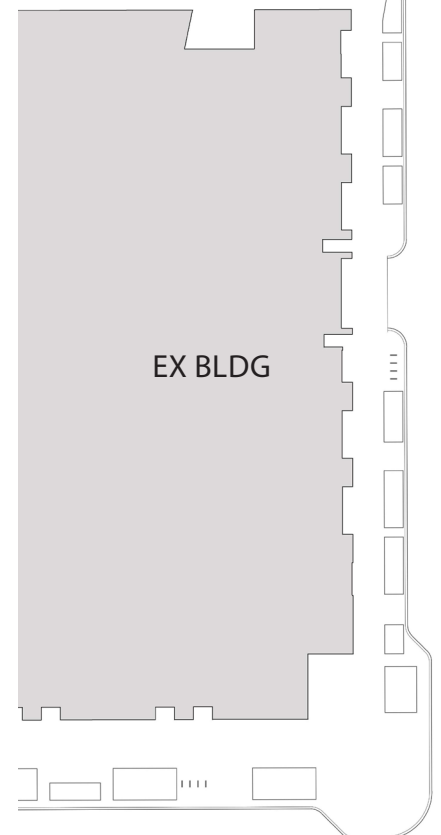
LEGEND

- 4TH ST FLEXIBLE USE SPACE
 - DESIGN, ART, CRAFT, FARMERS, HOLIDAY MARKETS

- KENNEDY ST FLEXIBLE USE SPACE
 - OUTDOOR FITNESS CLASSES, MOVIE VIEWING

- FLEXIBLE SEATING AREAS
 - LOUNGE SEATING, MOVEABLE TABLES AND CHAIRS, BOARD GAMES, AUTHOR READINGS

- CAFE WITH MOVEABLE TABLES AND CHAIRS AND UMBRELLAS



Suggested Plant Selection

PLANT MATERIAL LIST IS FOR REFERENCE ONLY. FINAL PLANT SELECTION WILL BE SUBJECT TO CHANGE.
FINAL PLANT SELECTION WILL BE APPROVED BY DDOT'S URBAN FORESTRY ADMINISTRATION.

LARGE SHADE TREES

<u>Botanical Name/ Common Name</u>	<u>Height @ Maturity</u>	<u>Location</u>	<u>Bioretention</u>	<u>Native</u>
<u>Acer rubrum</u> 'Red Sunset' Red Sunset Red Maple	40'-50'	Street Tree	X	X
<u>Acer saccharum</u> 'Legacy' Legacy Sugar Maple	40'-60'	Street Tree		X
<u>Catalpa speciosa</u> Northern Catalpa	40'-70'	Bioretention	X	X
<u>Cercidiphyllum japonicum</u> Katsura Tree	40'-60'	Speciman Tree		
<u>Gleditsia triacanthos var. inermis</u> Thornless Honeylocust	30'-70'	4th St		X
<u>Nyssa sylvatica</u> Black Gum	30'-50'	Bioretention	X	X
<u>Ostrya virginiana</u> Eastern Hophornbeam	25'-40'	Kennedy St, private		X
<u>Quercus bicolor</u> Swamp White Oak	50'-60'	Street Tree, Speciman	X	X
<u>Quercus coccinea</u> Scarlet Oak	50'-70'	Street Tree, Speciman		X
<u>Quercus rubra</u> Northern Red Oak	50'-70'	Street Tree		X
<u>Quercus phellos</u> Willow Oak	40'-75'	South Dakota Ave, Public Space		X
<u>Taxodium distichum var. distichum</u> Bald Cypress	50'-70'	4th St	X	X
<u>Ulmus parvifolia</u> 'Drake' Drake Chinese Elm	30'-35'	Street Tree, Allee		

ORNAMENTAL TREES

<u>Botanical Name/ Common Name</u>	<u>Height @ Maturity</u>	<u>Location</u>	<u>Bioretention</u>	<u>Native</u>
<u>Acer palmatum</u> Japanese Maple	25'-30'	Kennedy St, Private		
<u>Betula nigra</u> 'Dura Heat' Dura Heat River Birch	30'-40'	Ingraham St, Private, Bioretention	X	X
<u>Carpinus caroliniana</u> American Hornbeam	20'-30'	Speciman Ornamental Tree, Shade		X
<u>Cercis canadensis</u> Eastern Redbud	20'-30'	Speciman Ornamental Tree, Shade		X
<u>Cornus mas</u> Cornelian Cherry Dogwood	15'-25'	South Dakota Ave, Private		
<u>Cornus Kousa</u> Kousa Dogwood	15'-30'	Speciman Ornamental Tree		
<u>Crataegus phaenopyrum</u> Washington Hawthorne	25'-30'	Ingraham St, Private		X
<u>Magnolia virginiana</u> Sweetbay Magnolia	10'-35'	Bioretention	X	X
<u>Styrax japonicus</u> Snowbell	20'-30'	Speciman Ornamental Tree, Sun		

Suggested Plant Selection

PLANT MATERIAL LIST IS FOR REFERENCE ONLY. FINAL PLANT SELECTION WILL BE SUBJECT TO CHANGE.

SHRUBS

<u>Botanical Name/ Common Name</u>	<u>Height</u>	<u>Bioretention</u>	<u>Native</u>
<u>Clethra alnifolia</u> Sweet Pepperbush	3'-8'	X	X
<u>Cornus sericea</u> Redosier Dogwood	8'-12'	X	X
<u>Fothergilla gardenii</u> 'Mount Airy' Dwarf Fothergilla	3'-5'	X	X
<u>Hamamelis x intermedia</u> 'Arnold Promise' Arnold Promise Witchhazel	12'-15'		
<u>Hydrangea quercifolia</u> Oakleaf Hydrangea	6'-8'		X
<u>Ilex glabra</u> Inkberry Holly	5'-8'	X	X
<u>Ilex verticillata</u> 'Jim Dandy' Jim Dandy Winterberry	3'-6'	X	X
<u>Ilex verticillata</u> 'Red Sprite' Red Sprite Winterberry	3'-6'	X	X
<u>Ilex verticillata</u> 'Winter Red' Winter Red Winterberry	6'-8'	X	X
<u>Rhododendron maximum</u> Rosebay Rhododendron	5'-15'		X
<u>Rosa x</u> 'Radtkepink' Knock Out Double Knock Out Pink Rose	3'-4'		
<u>Viburnum acerifolium</u> Mapleleaf Viburnum	3'-6'		X
<u>Viburnum dentatum</u> Arrowwood Viburnum	6'-10'		X
<u>Viburnum lentago</u> Nannyberry Viburnum	14'-16'		X

PERENNIALS, GROUND COVERS, & ORNAMENTAL GRASSES

<u>Botanical Name/ Common Name</u>	<u>Height</u>	<u>Bioretention</u>	<u>Native</u>
<u>Achillea x</u> 'Moonshine' Moonshine Yarrow	1'-2'		X
<u>Agastache spp.</u> Giant Hyssop	2'-4'	X	X
<u>Alchemilla mollis</u> Lady's Mantle	1'-1.5'		
<u>Amsonia hubrichtii</u> Blue Star	2'-3'	X	X
<u>Asclepias incarnata</u> Swamp Milkweed	4'-5'	X	X
<u>Aster novae angliae</u> New England Aster	3'-6'	X	X
<u>Chasmanthium latifolium</u> Northern Sea Oats	2'-5'	X	X
<u>Chelone glabra</u> White Turtlehead	2'-3'	X	X
<u>Cimicifuga racemosa</u> Black Snakeroot	4'-6'		X
<u>Helleborus orientalis</u> Hellebore	1'-1.5'		
<u>Heuchera americana</u> American Alumroot	1'-2'		X
<u>Hypericum calycinum</u> St. John's Wort	1'-1.5'		
<u>Iris versicolor</u> Blue Flag Iris	2'-2.5'	X	X
<u>Geranium macrorrhizum</u> 'Ingwersen's Variety' Bigroot Geranium, Dark Pink	1'-1.5'		

Suggested Plant Selection

PLANT MATERIAL LIST IS FOR REFERENCE ONLY. FINAL PLANT SELECTION WILL BE SUBJECT TO CHANGE.

PERENNIALS, GROUND COVERS, & ORNAMENTAL GRASSES

<u>Botanical Name/ Common Name</u>	<u>Height</u>	<u>Bioretention</u>	<u>Native</u>
<u>Geranium maculatum</u> Wild Cranesbill Geranium	1.5'-2'		X
<u>Liatris spicata</u> Dense Blazing Star	2'-4'	X	X
<u>Liriope muscari</u> 'Big Blue' Big Blue Lilyturf	1'-1.5'		
<u>Nepeta x faassenii</u> 'Walker's Low' Catmint	2'-2.5'		
<u>Panicum spp.</u> Switchgrass	3'-6'	X	X
<u>Phlox stolonifera</u> Creeping Phlox	.5'-1'		X
<u>Polygonatum odoratum</u> 'Variegatum' Soloman's Seal	2'-3'	X	
<u>Rudbeckia fulgida</u> var. fulgida Black-Eyed Susan	2'-2.5'	X	X
<u>Salvia nemorosa</u> 'Blue Hill' Blue Hill Meadow Sage	1.5'-2'		
<u>Sarcococca hookeriana</u> Sweetbox	1'-2'		
<u>Senecio aureus</u> Golden Groundsel	.5'-2.5'	X	X
<u>Sporobolus heterolepis</u> Prairie Dropseed	2'-3'		X
<u>Tiarella cordifolia</u> Foam Flower	.75'-1'		X